

Model NSR12-PR Pull Rope Switch

Description

NSR12-PR Pull Rope Switches are designed for shutting down a conveyor belt or machinery and assuring system safety. They are also referred as "Pull Rope Switches". They are mounted alongside the conveyor belt, with tensioned steel cords attached to the switch arm from either side or both sides. When the cord is pulled, switch arm will turn until the locking angle and system shuts down. The switch can be reset manually with resetting lever.

The product is suitable for reliable long term usage in most industrial applications. Enclosure is aluminum cast and other parts are made of CuZn39Pb3 (brass). NSR12-PR series products do not require any maintenance. It offers an economical solution to short distance conveyor belt and machinery safety applications.

In standard applications, cord length is 50 m to both sides. This distance can be lengthened upon request. All models can be equipped with an alarm switch and signal light so alarming switch can be spotted from distance. Standard product's contact structure is 2NO+2NC.

All models conform to CE (European Union) and EAC (Eurasian Customs Union) standards. Microswitches used in these products are VDE approved.

We recommend tested and approved KBT Connection Equipment for installation.

Technical Specifications

- Enclosure: Aluminium Casting
- Micro Switch Rating: 230 VAC 10A / AC-15, Ue 250V, Ie 3A →
- Output Signal: (2) SDPT Stop
- Cable Gland: 3 x PG16
- Temperature Rating: -35°C to +80°C
- Contact Angle: 15°
- Rope Length: 2 x 50 metres
- Contact Type: Snap-action
- Protection Class: IP65
- Enclosure Color: Red (RAL 3020)
- Weight: 1.7 kg
- Mounting Orientation: It is suitable for double-sided use.
- Impact Rating: IK09 (EN 62262)
- Warranty Period: 12 Months

Options

- Without Reset Lever
- Custom Contact Angles
- Mounting Bracket
- Signal Light and Alarm

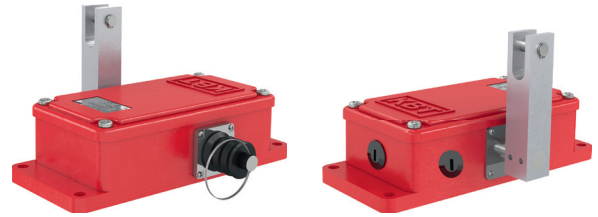
Safety Standards

- Electrical Safety EN 60947
- Mechanical Safety EN 60204
- Outdoor Safety EN 60529
- Impact Resistance EN 62262

Certificates

CE EAC

Micro switches are VDE approved.



Model Specifications

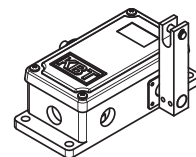
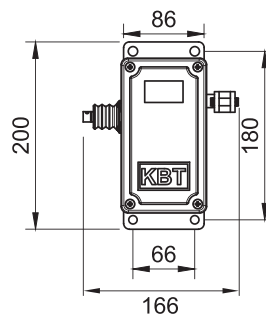
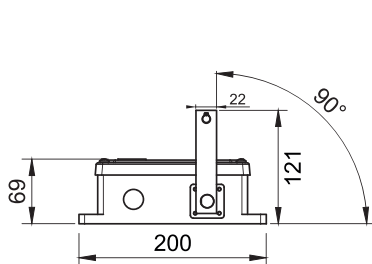
Model	Contact Structure		Optional	
	NC	NO	Signal	Alarm+Signal
NSR12-PR	1	1	(LGT)	(ALGT)
NSR12-PR-22	2	2	(LGT)	(ALGT)

Spare Parts

Model	Features
KB-NRP-K5	1NO+1NC
KB-R-05	PG16 Cable Gland
KB-KT-05	PG16 Blind Plug
BA-06	Mounting Bracket (Can be made in custom dimensions)
TSR-11-PR	Rope Connection Arm
KB-GVD-06	Enclosure

Please refer to the manual for instructions. See our KBT Accessories catalog for installation equipment.

Technical Drawing



Dimensions are in mm.

www.kbtelektrik.com