

Model NSR1520 Rotary Limit Switch

Description

NSR1520 Rotary Limit Switches are designed for hoisting and mechanical applications. Ensures maximum safety with high performance. It is mounted on crane walkway and used for applications like indicating machinery position, shutting down the system or alarms.

The product is suitable for reliable long term usage in most industrial applications due to its heavy duty design. Anti-static powder coated aluminium enclosure is resistant to corrosion and high temperatures. NSR1520 series products do not require any maintenance.

All models conform to CE (European Union) and EAC (Eurasian Customs Union) standards. Rotary switches used in these products are UL approved.

Technical Specifications

- Enclosure: Aluminum Casting
- Rotary Switch Rating: 690 V / 20A (→)
- Cable Gland: PG13,5
- Temperature Rating: -30°C to +80°C
- Rotation Angle: 360° in 90° steps
- Protection Class: IP65
- Enclosure Color: Red (RAL 3020) and Black (RAL 9005)
- Mounting Type: Directly to Switch Body
- Mechanical Endurance: 100000 cycles
- Impact Rating: IK08 (EN 62262)
- Warranty Period: 24 Months

Options

- ATEX Zone 21 / Zone 22
- Custom Contact Angles
- Custom Arm Dimensions

Safety Standards

- | | |
|-------------------|----------|
| Electrical Safety | EN 60947 |
| Mechanical Safety | EN 60204 |
| Outdoor Safety | EN 60529 |
| Impact Resistance | EN 62262 |

Certificates

CE EAC

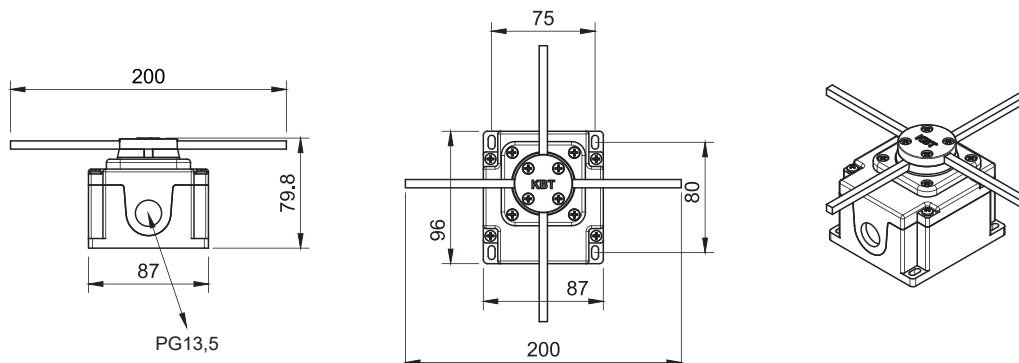
Micro switches are VDE approved.



Model Specifications

Model	Bar Length	Model	Bar Length
NSR1520-C1	300 mm	NSR1520-C1B	200 mm
NSR1520-C2	300 mm	NSR1520-C2B	200 mm
NSR1520-C3	300 mm	NSR1520-C3B	200 mm
NSR1520-C4	300 mm	NSR1520-C4B	200 mm
NSR1520-C5	300 mm	NSR1520-C5B	200 mm
NSR1520-C6	300 mm	NSR1520-C6B	200 mm

Technical Drawing



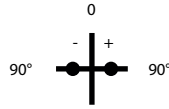
Dimensions are in mm.

www.kbtelektrik.com

Switch Options

NSR1520-C1

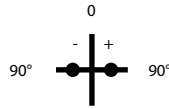
- Single speed
- 3 positions rotary
- Mechanical interlocking



1	3-4		×	×
	1-2	×	×	
		-90°	0	+90°

NSR1520-C2

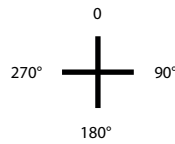
- Single speed
- 3 positions rotary
- Mechanical interlocking



2	7-8		×	×
	5-6	×	×	
1	3-4		×	×
	1-2	×	×	
		-90°	0	+90°

NSR1520-C3

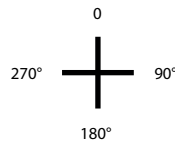
- Single speed
- 4 positions rotary
- Without mechanical interlocking



1	3-4	×		×	
	1-2	×		×	
		0	90°	180°	270°

NSR1520-C4

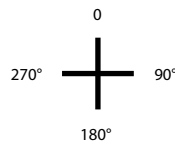
- Single speed
- 4 positions rotary
- Without mechanical interlocking



2	5-6	×	×		×
	1-2	×			
		0	90°	180°	270°

NSR1520-C5

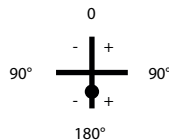
- Single speed
- 4 positions rotary
- Without mechanical interlocking



2	5-6	×			×
	1-2	×	×		
		0	90°	180°	270°

NSR1520-C6

- Two speed
- 4 positions rotary
- Mechanical interlocking



2	7-8	×	×	×	×	
	5-6	×	×	×		
1	3-4			×	×	×
	1-2		×	×	×	×
		-180°	-90°	0	+90°	+180°

Ask for different versions.