

Model NSR55-PS2 Spring Return Limit Switch

Description

NSR55-PS2 Spring Return Limit Switches are designed for conveyor systems, hoisting or machine handling applications. Adjustable arm length offers flexibility with your installation. Offers a light, compact and effective solution for your applications.

The product is suitable for reliable long term usage in most industrial applications due to its durable design. Anti-static powder coated aluminium cast enclosure is resistant to corrosion. Arm mechanism and all internal parts are metal cast. NSR55-PS2 series products do not require any maintenance.


The contact structure is 2 x 1NO+1NC. Maximum arm displacement is 55° in either direction. There are 2 contact points in per each direction.

All models conform to CE (European Union) and EAC (Eurasian Customs Union) standards. Microswitches used in these products are VDE approved.

Technical Specifications

- Enclosure: Aluminium Casting
- Micro Switch Rating: 240 V 3A ➔
- Output Signal: (2) SPDT Stop
- Cable Entry: PG13,5
- Operating Temperature: -40°C to +80°C
- Contact Angles: -55° and +55°
- Protection Class: IP65
- Enclosure Color: Red (RAL 3020)
- Weight: 1.1 kg
- Mounting Orientation: Suitable for double-sided use.
- Mechanical Durability: 10000000 cycles
- Impact Rating: IK09 (EN 62262)
- Warranty Period: 24 months

Options

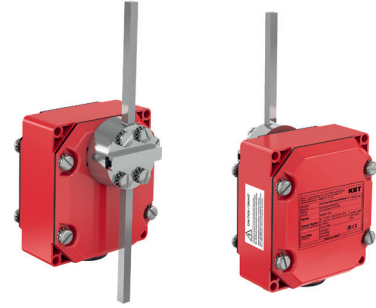
- Bus Safety Interface 
- Custom Contact Angles
- Mounting Brackets
- Custom Arm Length

Safety Standards

Electrical Safety	EN 60947
Mechanical Safety	EN 60204
Outdoor Safety	EN 60529
Impact Safety	EN 62262

Certificates

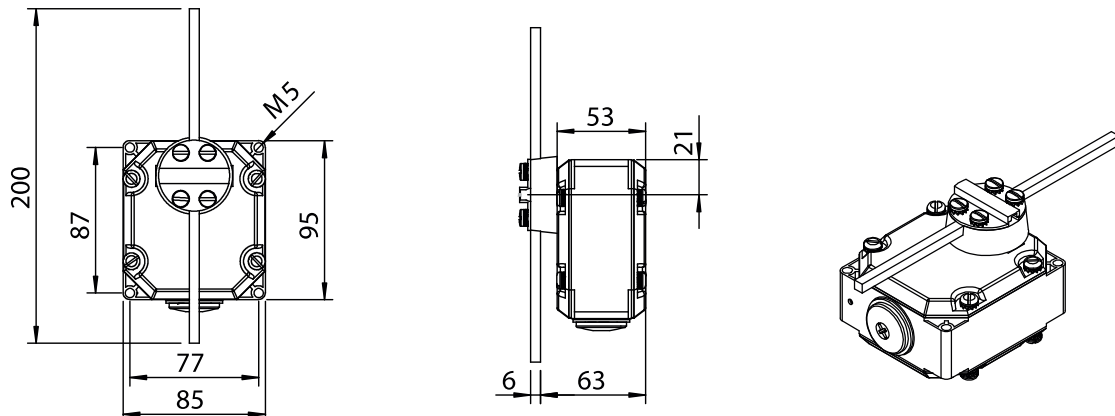
CE EAC
Micro switches are VDE approved.



Model Specifications

Model	Stop	
	NC	NO
NSR55-PS2	2	2

Technical Drawing



Dimensions are in mm.

www.kbtelektrik.com