

## Model NSR55-PS3 Spring Return Roller Lever Limit Switch

### Description

NSR55-PS3 Spring Return Roller Lever Limit Switches are designed for conveyor systems, hoisting or machine handling applications. Adjustable arm length offers flexibility with your installation. Thermoplastic roller eliminates friction in contact points to ensure a smooth and sound operation. Offers a light, compact and effective solution for your applications.

The product is suitable for reliable long term usage in most industrial applications due to its durable design. Anti-static powder coated aluminium cast enclosure is resistant to corrosion. Arm mechanism is made of metal and roller is thermoplastic. All internal parts are metal cast. NSR55-PS3 series products do not require any maintenance.


The contact structure is 2 x 1NO+1NC. Maximum arm displacement is 55° in either direction. There are 2 contact points in per each direction.

All models conform to CE (European Union) and EAC (Eurasian Customs Union) standards. Microswitches used in these products are VDE approved.

### Technical Specifications

- Enclosure: Aluminium Casting
- Micro Switch Rating: 240 V 3A ➔
- Output Signal: (2) SPDT Stop
- Cable Entry: PG13,5
- Operating Temperature: -40°C to +80°C
- Contact Angles: -55° and +55°
- Protection Class: IP65
- Enclosure Color: Red (RAL 3020)
- Weight: 1.1 kg
- Mounting Orientation: Suitable for double-sided use.
- Mechanical Durability: 10000000 cycles
- Impact Rating: IK09 (EN 62262)
- Warranty Period: 24 months

### Options

- Bus Safety Interface 
- Custom Contact Angles
- Mounting Brackets
- Custom Arm Length

### Safety Standards

- Electrical Safety EN 60947
- Mechanical Safety EN 60204
- Outdoor Safety EN 60529
- Impact Safety EN 62262

### Certificates

CE EAC

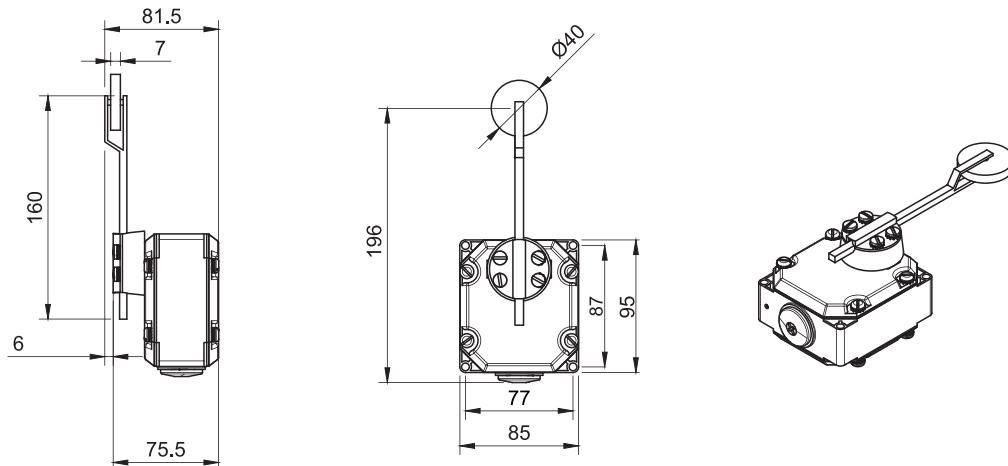
Micro switches are VDE approved.



### Model Specifications

Model	Stop	
	NC	NO
NSR55-PS3	2	2

### Technical Drawing



Dimensions are in mm.

[www.kbtelektrik.com](http://www.kbtelektrik.com)