

## Model TPR1520 Rotary Limit Switch

### Description

TPR1520 Rotary Limit Switches are designed for hoisting and mechanical applications. Ensures maximum safety with high performance. It is mounted on crane walkway and used for applications like indicating machinery position, shutting down the system or alarms.

The product is suitable for reliable long term usage in most industrial applications due to its durable design. ABS thermoplastic enclosure is corrosion proof. TPR1520 series products do not require any maintenance.

All models conform to CE (European Union) and EAC (Eurasian Customs Union) standards. Rotary switches used in these products are UL approved.

### Technical Specifications

- Enclosure: ABS Thermoplastic
- Rotary Switch Rating: 690 V / 20A (→)
- Cable Gland: PG13,5
- Temperature Rating: -55°C to +100°C
- Rotation Angle: 360° in 90° steps
- Protection Class: IP65
- Enclosure Color: Red (RAL 3020) and Black (RAL 9005)
- Mounting Type: Directly to Switch Body
- Mechanical Endurance: 100000 cycles
- Impact Rating: IK08 (EN 62262)
- Warranty Period: 24 Months

#### Options

- Custom Contact Angles
- Custom Arm Dimensions

#### Safety Standards

Electrical Safety	EN 60947
Mechanical Safety	EN 60204
Outdoor Safety	EN 60529
Impact Resistance	EN 62262

#### Certificates

CE

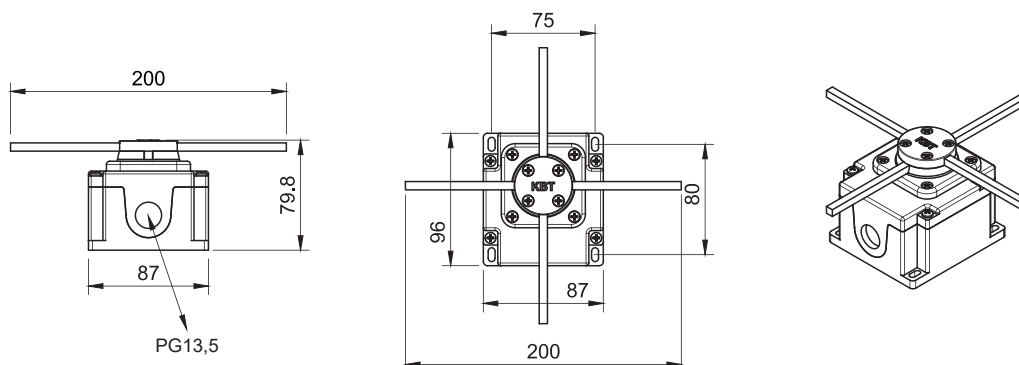
Micro switches are VDE approved.



### Model Specifications

Model	Bar Length	Model	Bar Length
TPR1520-C1	300 mm	TPR1520-C1B	200 mm
TPR1520-C2	300 mm	TPR1520-C2B	200 mm
TPR1520-C3	300 mm	TPR1520-C3B	200 mm
TPR1520-C4	300 mm	TPR1520-C4B	200 mm
TPR1520-C5	300 mm	TPR1520-C5B	200 mm
TPR1520-C6	300 mm	TPR1520-C6B	200 mm

### Technical Drawing



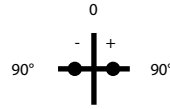
Dimensions are in mm.

[www.kbtelektrik.com](http://www.kbtelektrik.com)

## Switch Options

### TPR1520-C1

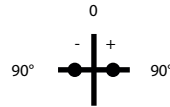
- Single speed
- 3 positions rotary
- Mechanical interlocking



1	3-4		×	×
	1-2	×	×	
		-90°	0	+90°

### TPR1520-C2

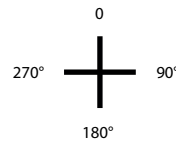
- Single speed
- 3 positions rotary
- Mechanical interlocking



2	7-8		×	×
	5-6	×	×	
1	3-4		×	×
	1-2	×	×	
		-90°	0	+90°

### TPR1520-C3

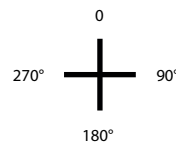
- Single speed
- 4 positions rotary
- Without mechanical interlocking



1	3-4	×		×	
	1-2	×		×	
		0	90°	180°	270°

### TPR1520-C4

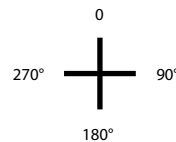
- Single speed
- 4 positions rotary
- Without mechanical interlocking



2					
	5-6	×	×		×
1					
	1-2	×			
		0	90°	180°	270°

### TPR1520-C5

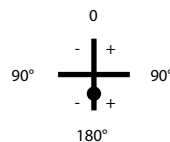
- Single speed
- 4 positions rotary
- Without mechanical interlocking



2					
	5-6	×			×
1					
	1-2	×	×		
		0	90°	180°	270°

### TPR1520-C6

- Two speed
- 4 positions rotary
- Mechanical interlocking



2	7-8	×	×	×	×	
	5-6	×	×	×		
1	3-4			×	×	×
	1-2		×	×	×	×
		-180°	-90°	0	+90°	+180°

Ask for different versions.