

Model KSA Rotary Limit Switch

Description

KSA Series Rotary Limit Switches are used for controlling various industrial machinery's movements, especially in crane and lifting applications. The shaft on the switch is connected to the machinery it controls. After specific number of rotations, the cam on the shaft will connect with internal switches and they will actuate. This feature will help you control your machinery.

Cams can be selected between three angles. This enables working with precision. Number of rotations can be set between 1:6 and 1:100. Switches can be made with 2, 3 or 4 contacts upon request.

Can be used in many industrial applications for years due to its high quality manufacturing process and quality.

Technical Specifications

- Enclosure: Thermoplastic
- Micro Switch Rating: 250 VAC 3A
- Output Signal: Max. 4 NC + 4 NO
- Cable Gland: M16x1,5
- Temperature Rating: -25°C to +70°C
- Contact Type: Snap-action
- Protection Class: IP67
- Enclosure Color: Black (RAL 9005)
- Weight: 300 g
- Mounting Orientation: It is suitable for single-sided use.
- Drive Type: Worm Drive
- Shaft Diameter: 8 mm or 12 mm optional.
- Mechanical Life: 2 x 1000000 Cycles

Options

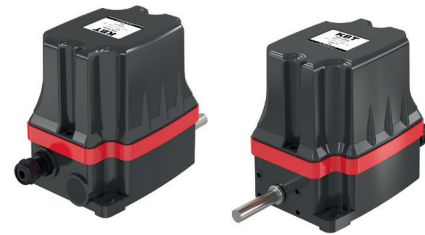
- Cam Type/Angle
- 8 mm or 12 mm Shaft Diameter
- Ratios

Safety Standards

- Electrical Safety EN 60947
- Mechanical Safety EN 60204
- Outdoor Safety EN 60529

Certificates

- CE ENEC
- Micro switches are VDE approved.



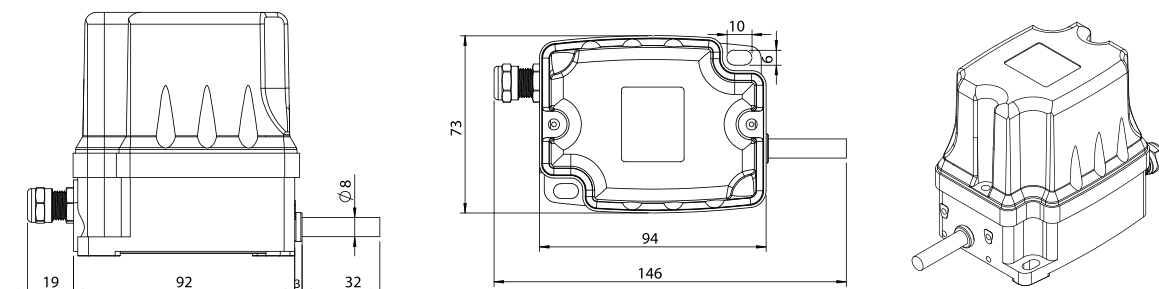
Model Specifications

Ratios	2 Contacts	3 Contacts	4 Contacts
1:6	KSA06-2B	KSA06-3B	KSA06-4B
1:9	KSA09-2B	KSA09-3B	KSA09-4B
1:15	KSA15-2B	KSA15-3B	KSA15-4B
1:25	KSA25-2B	KSA25-3B	KSA25-4B
1:35	KSA35-2B	KSA35-3B	KSA35-4B
1:50	KSA50-2B	KSA50-3B	KSA50-4B
1:75	KSA75-2B	KSA75-3B	KSA75-4B
1:100	KSA100-2B	KSA100-3B	KSA100-4B
1:150	KSA150-2B	KSA150-3C	KSA150-4C
1:175	KSA175-2B	KSA175-3C	KSA175-4C
1:200	KSA200-2B	KSA200-3C	KSA200-4C

Standard Cam Types and Angles

Cam Type A	Cam Type B	Cam Type C

Technical Drawing



Dimensions are in mm.

www.kbtelektrik.com